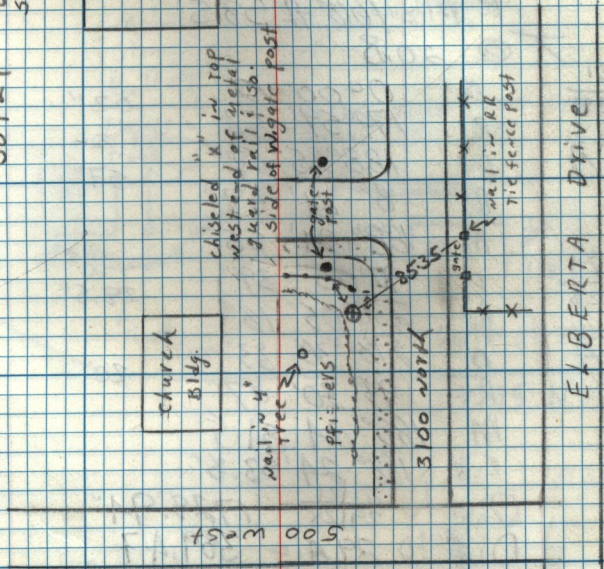
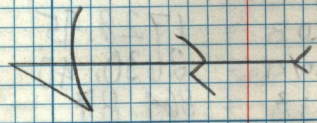


9/10/86
Slaugowski
Butters

T 7th rd R/W
19/20
30/29

date: 1967
0.10' below
sidewalk surface



WEBER
High School
Seminary
Bldg.

church
Bldg.

W gate post - sec cor = 8.77'
guard rail - sec cor = 1.16'
well in tree - sec cor = 19.64'

Brass Mon.
Just North of Sidewalk

ELBERTA DRIVE